



**LOCK & SAVE**  
**PRODUCE BIN®**

# LOCK & SAVE PRODUCE BIN®

New Zealand's most versatile storage and transport solution for agricultural, meat and poultry producers, setting a new standard in sustainable, efficient and hygienic reusable bulk bins.

Made from high quality food-grade plastics and both fast and easy to assemble, the Lock & Save Produce Bin® is a tough, light-weight storage bin using a patented Lock and Unlock system.

Producers can safely combine a nesting bin and pallet for food storage, capable of stacking up to ten bins high. Our patented Unlock system separates the nesting bin and pallet for maximised storage capability, providing a stacking height of 26 nesting bins and 38 pallets for our Large 780 L Nesting Bins.

The Lock & Save Produce Bin's® patented corrugated nesting design and chamfered venting holes significantly lessens food bruising and improves hygiene standards by reducing exposure to bacteria and fungal growths.

Our unique Lock and Unlock technology also maximises workforce efficiencies and employee safety, utilising unique patented locking mechanism that requires one person operation when connecting and disconnecting the nesting bin from the pallet.

Importantly, our bins are compatible with existing plastic food bins in the market. The Lock & Save Produce Bin® is available as a 2-Way bin in a Large 780 L capacity, with vented nesting bins for fresh produce storage and transport, as well as non-vented nesting bins for meat and poultry producers.

## STACKING / NESTING >

Solid and Vented truck load ability on Pantech / T-Liner

### SPECIFICATIONS

Dimensions	
Height External (mm)	780
Height Internal (mm)	642
Length External (mm)	1165
Length Internal (mm)	1090
Width External (mm)	1165
Width Internal (mm)	1090

Nesting Bin 780 Large	
Ventilation - Vented and Non-Vented	
Unit Weight - 2-Way Vented (kg)	38
Unit Weight - 2-Way Non-Vented (kg)	40
Volume (L)	780
Maximum Load Capacity/Unit (kg)	500
Operating Temperature Range	-30°C to 50°C

Stacking on Location	
Pallet Attached Cold Storage up to 30°C	5 High
Pallet Attached 40°C Storage	5 High
Pallet Attached Empty	15 High

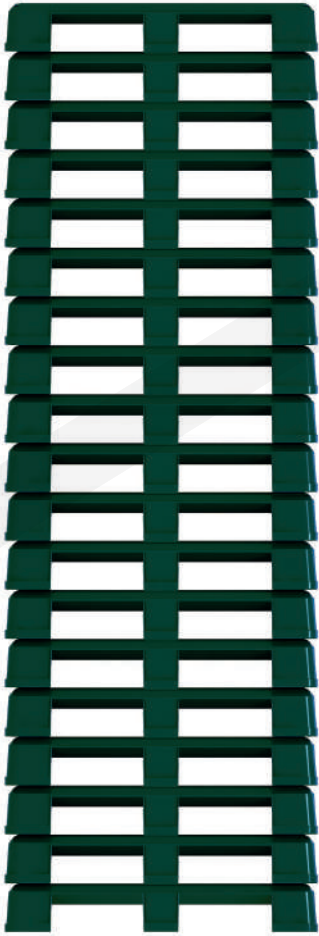
Nesting on Location	
Pallet Detached	38 High
Bin Detached	26 High

Stacking for Truck Transportation	
Stack (Pallet Attached)	3 High
Nest (Bin Only)	14 High
Nest (Pallet Only)	26 High

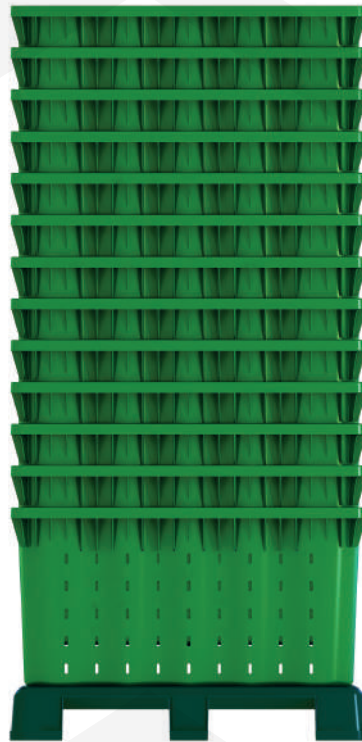


# LOCK & SAVE PRODUCE BIN<sup>®</sup>

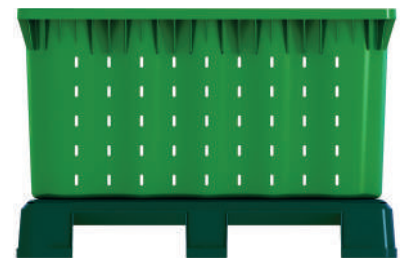
New Zealand's strongest, most versatile storage and transport



The Lock & Save Produce Bin<sup>®</sup> and Pallet design gives you maximum storage and stacking capability.

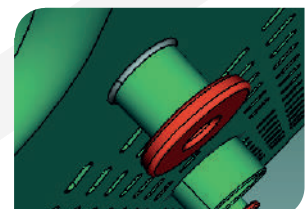


Corrugated and chamfered design reduces food damage and is easy to clean.



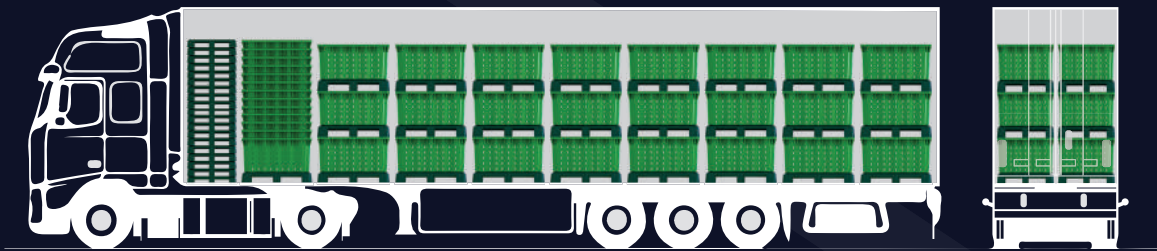
2-Way Pallet with vented holes

Patented Lock and Unlock technology for one-person operation and maximum stacking.



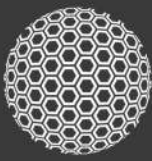
## KEY FEATURES >

- Up to 30% lighter than standard reusable bins
- More durable, using high quality food grade plastics
- Better hygiene control, easy to clean and impervious to moisture
- Unique patented corrugated design and increased ventilation reduces product damage and improves packout rate
- Patented interlocking Lock & Unlock technology allows for one person operation
- Compatible stacking with existing plastic fruit bins in the market
- Vented and Non-Vented nesting bins
- No liner bag required for meat and poultry storage, reducing packaging costs
- Storage nesting to 38 High pallets and 26 High Nesting Bins using Large 780 L solution
- Bin and Pallet stacking capability significantly reduces transport and relocation costs, allowing up to 215 nested bins/pallets per truck.



2-Way Entry, Lock & Save® Large (780 Volume litres) | Stacking = 3 High = 66 per truck (goods in transit)

Nest = 14 High (Bins) & 26 High (Pallets) = 215 per truck (relocations / returns). Diagram is indicative only and not to scale.



## APBB780 VENTED

### Product Overview

Made from high quality food-grade plastics and both fast and easy to assemble, the APBB780 Vented is a tough, light-weight storage bin using a patented Lock and Unlock system.

Producers can safely combine a nesting bin and pallet for food storage, capable of stacking up to ten bins high. Our patented Unlock system separates the nesting bin and pallet for maximised storage capability, providing a stacking height of 26 nesting bins and 38 pallets for our Large 780L Nesting Bins.

Our unique Lock and Unlock technology also maximises workforce efficiencies and employee safety, utilising unique patented locking mechanism that requires one person operation when connecting and disconnecting the nesting bin from the pallet.

Importantly, our bins are compatible with existing plastic food bins in the market. The APBB780 Vented is available as a 2-Way bin in a Large 780 L capacity, with vented nesting bins for fresh produce storage and transport, as well as non-vented nesting bins for meat and poultry producers.

#### APBB780 Vented Specifications:

✓	External Specifications (industrial standards): L 1165 x W 1165 x H 780
✓	Internal Specifications (industrial standards): L 1090 x W 1090 x H 642
✓	Ventilation: Vented and Non-Vented
✓	Unit Weight - 2 Way Vented: 38kg
✓	Unit Weight - 2 Way Non-Vented: 40kg
✓	Volume: 780L
✓	Maximum Load Capacity/Unit: 500kg
✓	Operating Temperature Range: -30°C to 50°C
✓	Stack (Pallet Attached): 3 High
✓	Nest (Bin Only): 14 High
✓	Nest (Pallet Only): 26 High
✓	1 x Pallet = 6 x Bins & Pallets
✓	Suitable for warehouse racking

### FEATURES AND BENEFITS

#### Nestable

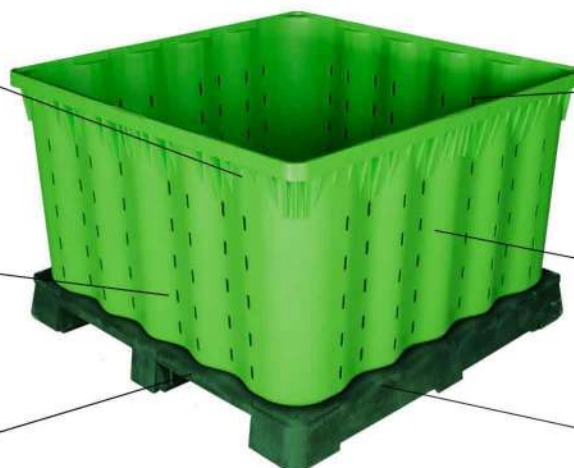
The APBB780 has the ability and nest for more cost effective transportation

#### Locking and Unlocking

Utilising unique patented locking mechanism that only requires one person operation

#### Existing Market

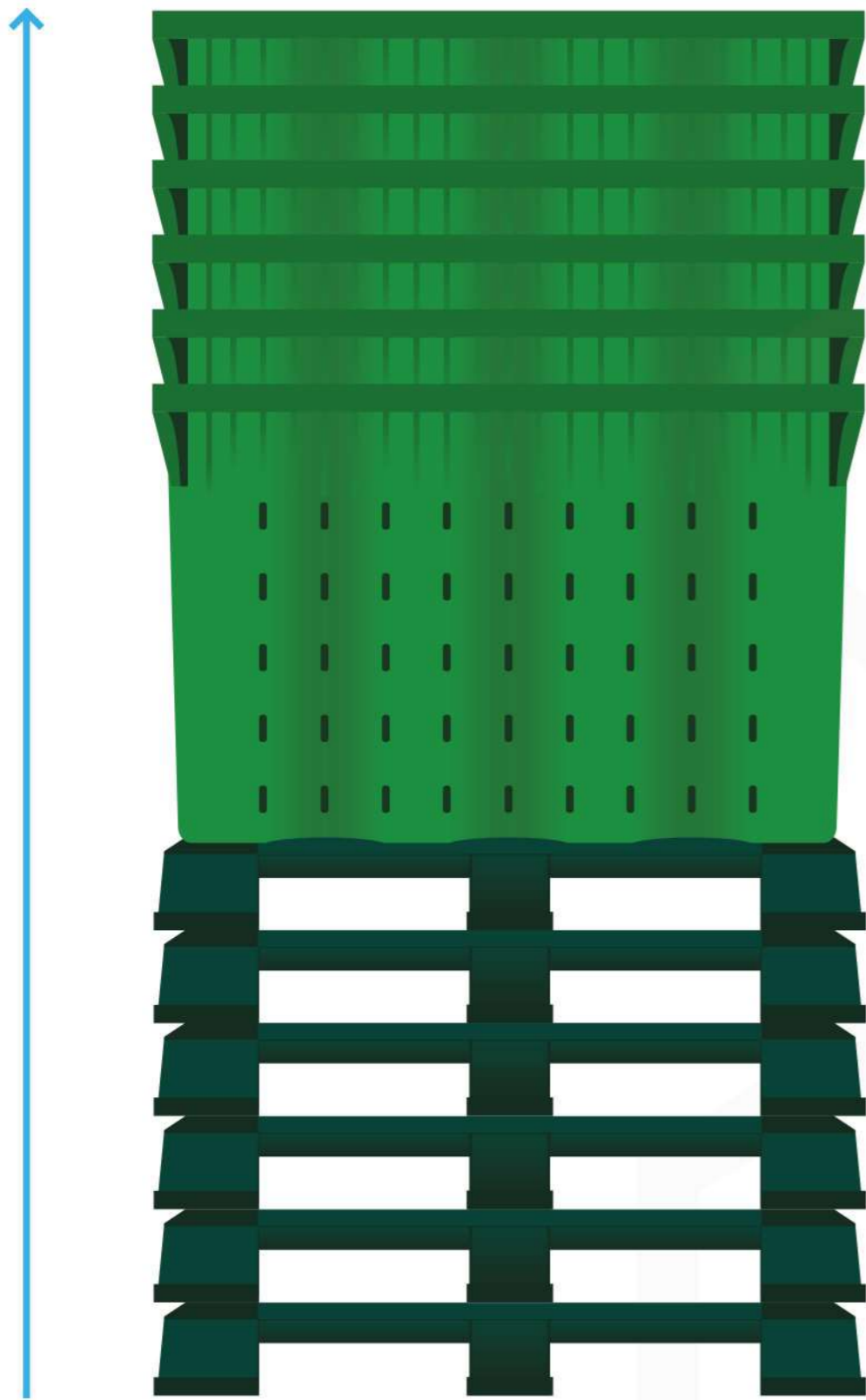
The APBB780 is compatible with existing plastic food bins in the market



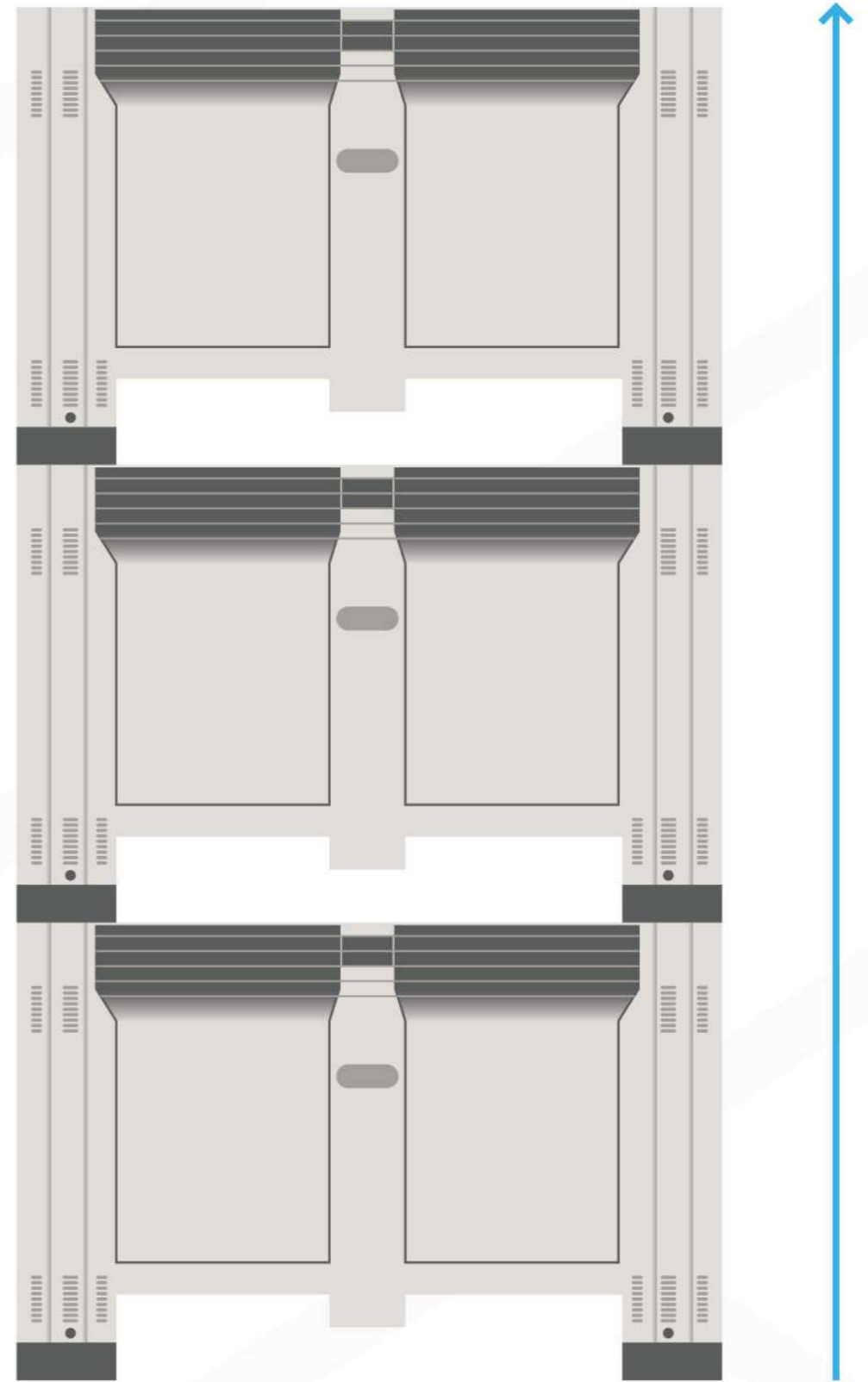
**Polypropylene**  
Made from high quality food-grade plastic

**Design**  
Patented corrugated nesting design and chamfered venting holes

**Plastic Pallet**  
Attaches and detaches from bin using a patented lock and unlock system



VS.



Our nested **Lock and Save bins**  
double your freight capacity!



**IFP GROUP**  
Industry Focused Products

**SAVE**  
**50%**  
**in freight!**